



GMT MONTHLY MEMBERSHIP PROGRESS REPORT

Results as of: 6/30/2018

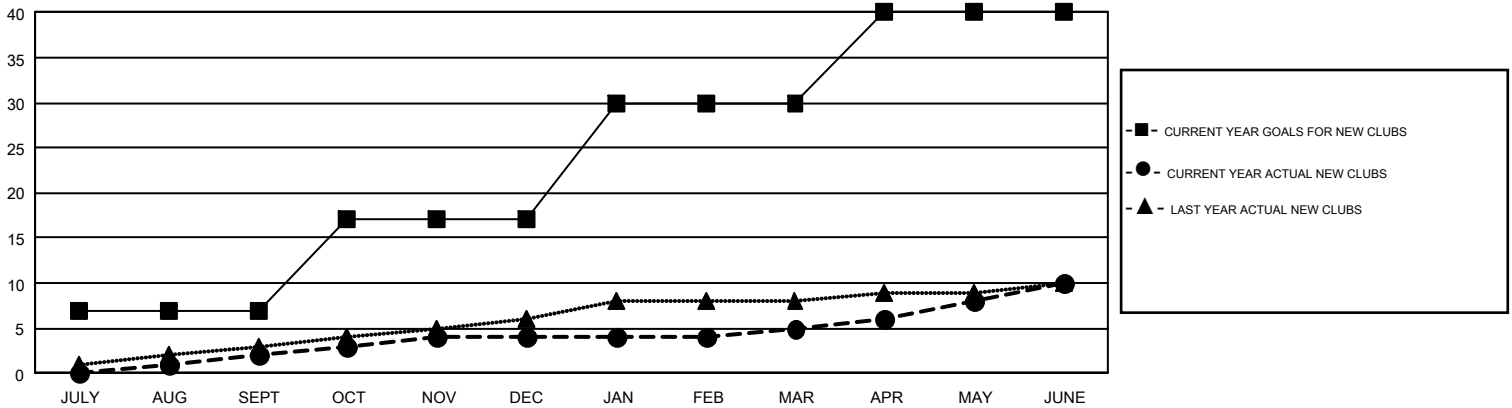
GMT Constitutional Area 1, Group D

GMT: MICHAEL MOLEND A

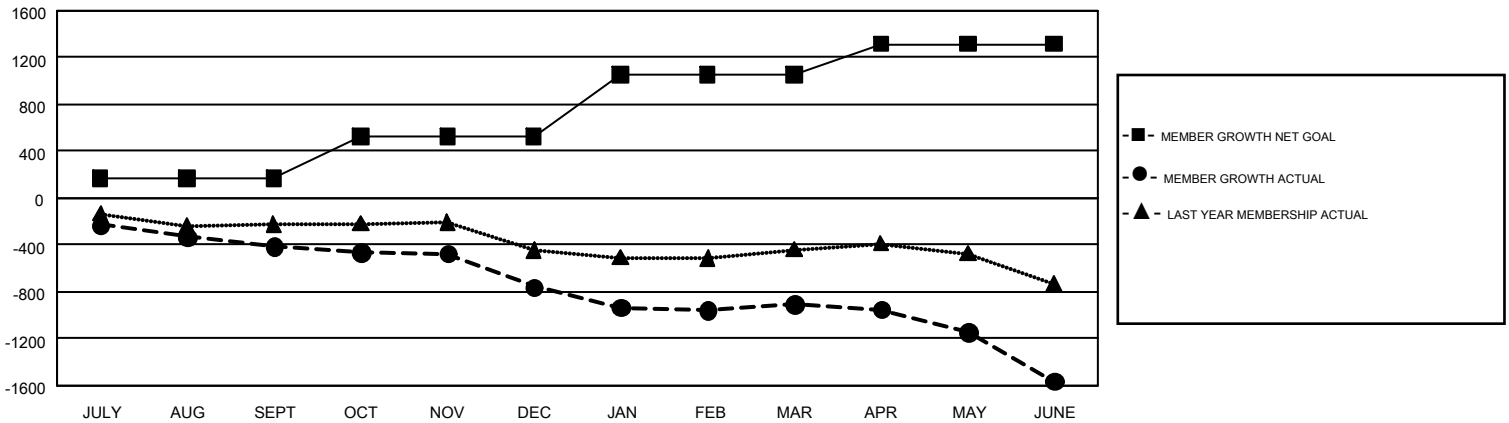
REPORT DOES NOT INCLUDE CLUBS IN UNDISTRICTED AREAS.

Clubs				Members			
RESULTS FOR 2017-2018				RESULTS FOR 2017-2018			
QUARTER	NEW CLUB GOAL	NEW CLUBS	DROPPED CLUBS	QUARTER	MEMBER GROWTH NET GOAL	MEMBER GROWTH ACTUAL	DROPPED MEMBERS ACTUAL (including transfers)
JULY/AUG/SEPT	7	2	5	JULY/AUG/SEPT	169	954	1,243
OCT/NOV/DEC	10	2	12	OCT/NOV/DEC	355	1,040	1,286
JAN/FEB/MAR	13	1	5	JAN/FEB/MAR	528	1,027	1,049
APR/MAY/JUNE	10	5	8	APR/MAY/JUNE	266	1,571	2,120

GOALS AND ACTUAL NEW CLUBS CUMULATIVE



GOALS AND ACTUAL MEMBERS CUMULATIVE



DROPPED CLUBS: 30	1,024 CLUBS OF 1,537 ADDED 1 OR MORE NEW MEMBERS	<u>GENDER DISTRIBUTION</u>
<u>DROPPED MEMBERS</u>	CLICK HERE FOR CUMULATIVE MEMBERSHIP DATA	MALE 35,047 (74.06%)
DECEASED 675		FEMALE 12,274 (25.94%)
CLUB CANCELLED 192		TOTAL FAMILY UNIT MEMBERS 0
OTHER 4,831		FAMILY MEMBERS PAYING HALF DUES 0
TOTAL 5,698		